

**CRANE**

Composites



**frp** FIBERGLASS REINFORCED PANELS

SEQUENTIA® WALL PANELS | VARIETEX® | TRANSLUCENT CORRUGATED PANELS



# SEQUENTIA®

Wall Panels

## PEBBLED EMBOSSED TEXTURE



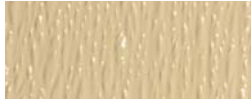
White | 1130



Almond | 1114



Ivory | 0084



Beige | 0070



Stone | 0015



Silver | 0066



Pearl Gray | 0048



Black | 1201

## SMOOTH TEXTURE



White | 1130



## traditional wall panels

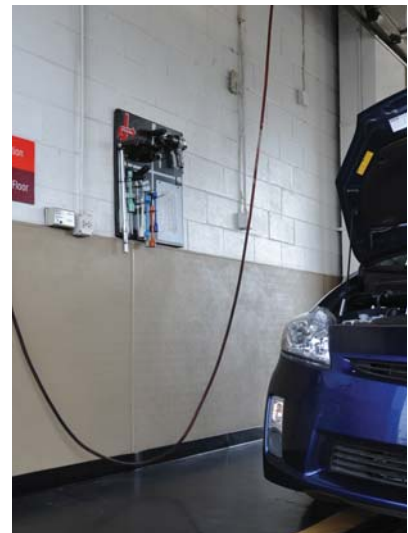
Sequentia FRP wall and ceiling panels are durable, cleanable and easy to install. Panels are available in a Class A or Class C fire rating per ASTM E-84. Sequentia Traditional FRP panels are ideal for areas where a cleanable and sanitary finish is essential.



SEQUENTIA EMBOSSED | WHITE (1130)



SEQUENTIA EMBOSSED | SILVER (0066)



SEQUENTIA EMBOSSED | BEIGE (0070)

Add structural strength with SEQUENTIA LAMINATED PANELS featuring an FRP panel laminated to a rigid substrate, which can be installed directly to studs or used as a ceiling panel.

## APPLICATIONS

- Commercial Kitchens
- Restrooms
- Convenience Stores
- Locker Rooms
- Food Processing Plants

## FEATURES

- Mold & Mildew Free
- Meets USDA/FSIS Requirements
- Easy to Install
- Cleanable
- Durable

## ACCESSORIES

- Standard Vinyl/PVC Moldings

## SEQUENTIA FLAT PANEL PRODUCT SPECS

- AVAILABLE SIZES: 4' x 8' | 4' x 10' (other sizes available upon request)
- THICKNESSES: 0.09" (embossed) | 0.075" (smooth)
- FIRE RATINGS: Class A or Class C per ASTM E-84  
\* Embossed Black is available in a Class C fire rating only

## SEQUENTIA LAMINATED PANEL PRODUCT SPECS

- WALL SIZES: 4' x 8' | 4' x 10'
- CEILING SIZES: 23.75" x 23.75" | 23.75" x 47.75"
- AVAILABLE SUBSTRATES:  
Gypsum 1/2" | 5/8"  
Plywood 3/8" | 1/2" | 5/8" | 3/4"  
Oriented Strand Board 3/8" | 1/2" | 5/8"  
Fluted Polypropylene 0.32" | 0.40"  
Double-Sided ACP Core 0.12" | 0.24"

Patterns and colors are a representation and may not accurately reflect the final product. Please obtain a sample of the product before making a final selection at [www.frpsamples.com](http://www.frpsamples.com)

# VARIETEX®

Innovative Textured and  
Colored Wall Panels

## SANDSTONE TEXTURE



Cotton White | 1130



Almond Breeze | 866



Fawn Brown | 809



Morning Mist Gray | 636

## LINEN TEXTURE



Cotton White | 1130



Almond Breeze | 866



Fawn Brown | 809



Morning Mist Gray | 636

## TILE-LOOK FINISH



Cotton White | 1130



Almond Breeze | 866

## BEADED TEXTURE



Cotton White | 1130



## warm designs

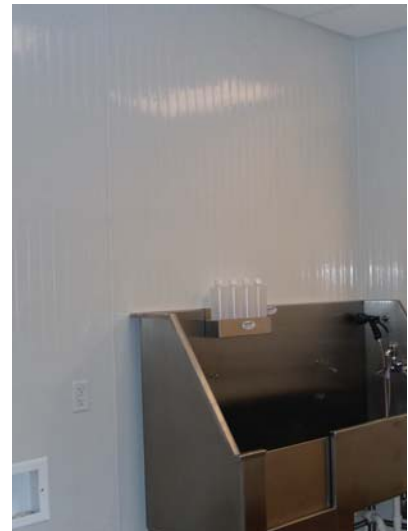
Add depth and dimension to walls, with our unique textures including sandstone, linen, tile and beaded finishes. Beyond the beauty, Varietex offers all the same benefits of traditional FRP wall coverings



VARIETEX LINEN | MORNING MIST GRAY (636)



VARIETEX SANDSTONE | ALMOND BREEZE (866)



VARIETEX BEADED | COTTON WHITE (1130)

Take your surfaces beyond traditional frp with a tile look, linen or sandstone textures. The grout lines are sealed for easy maintenance, avoiding the grimy build up encountered with regular tile.

## APPLICATIONS

- School Hallways
- Cafeterias
- Dining Rooms
- Reception Areas
- Health Clubs
- Hospitals
- Assisted Living Centers

## FEATURES

- Mold & Mildew Free
- Easy to Install
- Cleanable
- Durable

## ACCESSORIES

- Silhouette Trims® Moldings
- Beaded Panel Moldings

## PRODUCT SPECS

- AVAILABLE SIZES: 4' x 8' | 4' x 10'
- THICKNESSES: 0.09" (Sandstone and Linen) | 0.075" (Beaded)
- FIRE RATINGS: Class A per ASTM-E84 (Sandstone and Linen only) | Class C per ASTM-E84

\* Custom colors available upon request

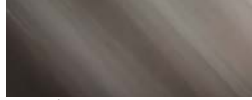
# SEQUENTIA®

Translucent Corrugated Panels

## SUPER 600®



Clear | 700



White | 920



Green | 1307

## WEATHERGLAZE®



Clear | 711



White | 912



Green | 933

## APPLICATIONS

- Patios
- Pool Enclosures
- Privacy Fences
- Carports
- Deck Covers

## PRODUCT INFO

**SUPER 600:**  
Enhanced Weathering FRP Panel  
UV Resistant Properties  
Smooth Finish  
Twenty Year Limited Warranty

**WEATHERGLAZE:**  
Standard FRP Panel  
Textured Look  
Ten Year Limited Warranty



# add coverage

Sequentia Translucent Corrugated Panels are ideal for patios, pool enclosures, privacy fences, carports, decks and more. We offer a variety of products to meet the needs of both commercial and residential applications.

SEQUENTIA SUPER 600  
WHITE (920)

# ACCESSORIES

For Panel Installation

## VINYL/PVC MOLDINGS



Standard for SEQUENTIA Flat and Wide for SEQUENTIA Laminated

## SILHOUETTE TRIMS®



For VARIETEX Textures

## BEADED PANEL MOLDING



For VARIETEX Beaded Wall Panels

## CORRUGATED MOLDINGS



For SEQUENTIA Corrugated

## INSTALLATION TOOLS

Crane Composites wall panels are easy to install with our stocked accessories and tools.

Installation accessories include our Crane Fast Grab or Crane Advanced Polymer Adhesive, rollers and trowels along with detailed installation guides and videos. Visit [cranecomposites.com/resources.html](http://cranecomposites.com/resources.html) for detailed installation information.



Patterns and colors are a representation and may not accurately reflect the final product. Please obtain a sample of the product before making a final selection at [www.fpsamples.com](http://www.fpsamples.com)

## ABOUT CRANE COMPOSITES

Crane Composites Inc., a subsidiary of Crane Co. (NYSE:CR), is the world's leading provider of fiber-reinforced composite materials.

Since 1954, we have continued to pioneer numerous patented technologies for industrial and commercial product applications. We've built a proven reputation for industry leadership by partnering with customers and suppliers to deliver advanced, industry-leading solutions.

Our products and our team reflect our mission statement: We are a performance driven organization committed to global leadership and the production of high quality composite materials. And we are committed to profitable growth that benefits our employees and stakeholders by adhering to our high standards of Operational Excellence and our Crane Values.

Customers benefit not only from the outstanding performance characteristics of our products; they also realize value from our extensive product support program. Our expert product teams are focused on the needs of customers to provide unparalleled service and expertise.



**CRANE** Composites



[cranecomposites.com](http://cranecomposites.com) | 1.800.435.0080 | 1.815.467.8666 [fax] | [salesbp@cranecomposites.com](mailto:salesbp@cranecomposites.com)

The following are trademarks of Crane Composites, Inc. or a related company: Sequentia, Kemlite, Silhouette Trims and Varietex

Form 6680 | Rev. 18 | 6.15 | (7483)